



35. Jahrestagung des Arbeitskreises Meere & Küsten; 19.04. – 22.04.2017 in Kiel

Programm

zur 35. Jahrestagung des

Arbeitskreises

Geographie der Meere und Küsten (AMK)



der Deutschen Gesellschaft für Geographie (DGfG)

Program
of the 35th Annual Conference
of the Working Group „Geography of Seas and Coasts“ (AMK)

Universität Kiel und Kiel Marine Science
19.-22. April 2017





35. Jahrestagung des Arbeitskreises Meere & Küsten; 19.04. – 22.04.2017 in Kiel

Tagungsort / Venue: Wissenschaftszentrum Kiel; Fraunhoferstraße 13, 24118 Kiel

Lage- & Anfahrtsskizze siehe / see link for location

<http://www.wissenschaftspark-kiel.de/wp-content/uploads/2015/10/Anfahrtsskizzen-2015.pdf>

Programmübersicht / Program Overview:

Mi., 19. April, from 18:30 Uhr: **Icebreaker-Party**

Ort/ location: **Traditionslokal Schiffercafé**; address: Kiel Holtenau, Tiessenkai 9-10; 24159; Tel. 0431 / 9089676; more information see: <http://www.schiffercafe-kiel.de/>

for directions see <http://www.schiffercafe-kiel.de/index.php/contact>

Das Schiffercafé ist auch zu erreichen mit der Buslinie 91 ab Bahnhof oder Universität (bis Haltestelle Schleuse); zurück am Abend mit der Buslinie 32;

Bus #91 goes to Schiffercafé from train station or university (take stop named Schleuse); return (evening)bus back into town is #32

Busnetzplan / plan for city buses see <http://netzplan-kiel.de/index.php/de/netzplan>

Scientific program

Do., 20.04. and Fr., 21.04 at Wissenschaftszentrum

starting at 08:00 Uhr registration in the Foyer and putting up the posters

starting at 09:00 a.m.

- Oral presentations in rooms Einstein and Siemens of Wissenschaftszentrum
- Poster presentations, coffee breaks and lunch breaks in the foyer

20.04. at 19:00 evening get-together at Jack's Kitchen ; 300 m from Wissenschaftszentrum at the corner of Westring and Olshausenstraße: <http://www.jackskitchen.de/>

21.04. at 18:30 evening get-together at Forstbaumschule (beer garden & park restaurant; about 15 Min. walk from Wissenschaftszentrum (see www.forstbaumschule.de)

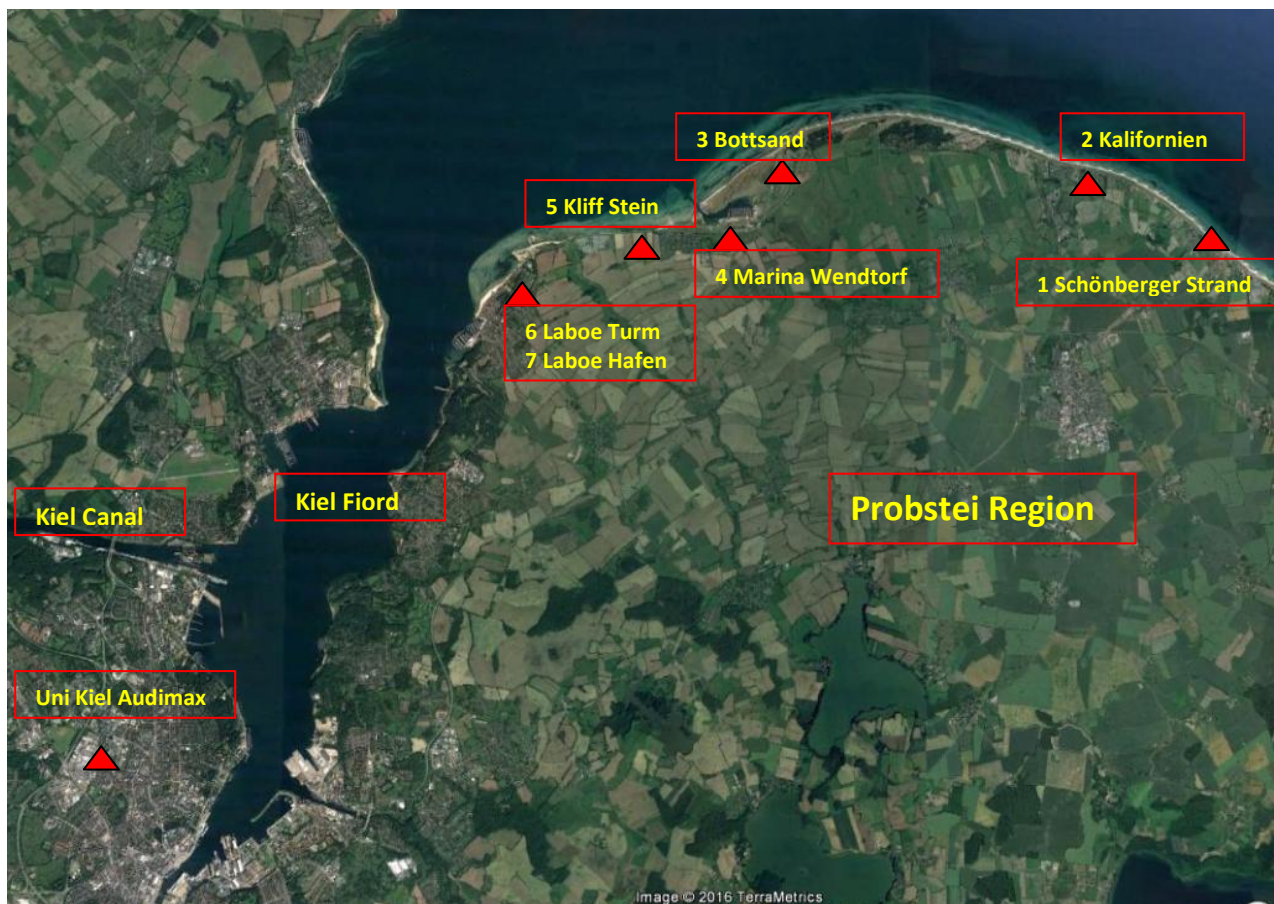
All locations are to be found at:

https://drive.google.com/open?id=1KV4TKRtIWF5-qE_OwnIkDyJaol4&usp=sharing

EXKURSION - FIELD TRIP

Sa, 22. April field trip coastal region northeast of Kiel (Probstei) & Kiel Fjord

7 stops on the field trip (see map): covering coastal processes – protection - management



1. Schönberger Strand: Infopavillon State Dike – protection against stormfloods
2. Klimapavillon Kalifornien: risk management in the light of climate change
3. Bottsand: spit formation and long-term shaping of the coastal landscape
4. Marina Wendtorf: recent tourism development and nature conservation
5. Cliff coast at Stein: coastline retreat due to storm flood impacts
6. Marine monument: overview on coastline changes and management issues
7. Laboe harbor: return to Kiel via car or ferryboat (at 15:30)

Arrival at Kiel (train station or university) at 16:30 Uhr



35. Jahrestagung des Arbeitskreises Meere & Küsten; 19.04. – 22.04.2017 in Kiel

Vortragsprogramm 20.04.2017

Program for presentations (15 min. + 10 min. discussion)

08:00 – 09:00 Uhr: Anmeldung / registration & putting up posters

09:00 - 09:10: Begrüßung / welcome

09:10 – 09:30 Einführungsvortrag – introductory speech

Klepp, Silja, Kiel

Narrating climate change: environmental migration in an interdisciplinary perspective

From 09:30: continuation in 2 parallel sessions

20.04. time	Session Theme (parallel) A -1: coastal geology/ morphodynamics/ hydrography	Session Theme (parallel) B 1: Coastal Societies / CC adaptation/ Integrated Coastal Zone Management
09:35	Schürch, Mark, Cambridge & Dolch, T., Kiel Changing sediment dynamics of a mature tidal salt marsh in response to sea-level rise and storm events	Ahrendt, Kai, Kiel <i>Eine multifunktionale Küstenklassifikation zur Beurteilung der Auswirkungen von Klimaänderungen</i>
10:00	Wittbrodt, Kerstin, Kiel <i>Sedimentological built-up of Amrum Bank (North Sea)</i>	Greve, Catharina, Melbourne, Australien <i>Coastal protection australian style</i>
10:25- 10:45	Coffee break	Coffee break
10:45	Sander, Lasse, List/Sylt <i>Holocene Evolution of Caleta de Los Loros, Argentina</i>	Wolff, Anke, Berlin Barriers to flood protection empirical evidence from Baltic coastal communities in Schleswig-Holstein
11:10-	Richter, Peter, Kiel <i>The influence of Pleistocene deposits on recent surface sediment distribution patterns in the German Bight</i>	Reimann, Lena, Kiel <i>Regionalized Shared Socioeconomic Pathways for Coastal Impact Assessment</i>
11:35	Hildinger, Annette, Karlsruhe <i>Coastal Squeeze at the French Mediterranean Coast: linking geospherical and biospherical aspects</i>	Weerts, Henk, Amersfort / NL <i>Using cultural heritage to improve environmental planning and coastal safety programs in the Netherlands</i>
12:00	Engel, Max, Köln <i>Tsunami deposits of the Caribbean - a new database assists in coastal hazard assessment</i>	Link, Michael, Hamburg <i>Wer Wind sät wird Bioenergie ernten?</i>

Plenary

12:25 - 13:20 Lunch Break

13:20 – 13:50 **Short presentations of posters**

20.04. time	Session Theme (parallel) A -2: coastal geology/ morphodynamics/ hydrography	Session Theme (parallel) B 2: Coastal Societies / CC adaptation/ Integrated Coastal Zone Management
13:50	Dammschneider, Hans-J., Zug / CH <i>AMO and PDO ... do the air temperatures and the RSML round the North- and Baltic-Sea follow oceanic cycles?</i>	Spiekermann, Jan; Oldenburg Entwicklung nachhaltiger Anpassungsstrategien für das Entwässerungsmanagement an der Nordseeküste
14:15	Jensen, Jürgen, Siegen <i>Aktueller Status (bis 2014) der Änderungen in den Tidewasserständen der Deutschen Bucht/Nordsee</i>	Gripp, Tamara, Kiel <i>Monitoring sustainable development of the Wadden Sea Region</i>



35. Jahrestagung des Arbeitskreises Meere & Küsten; 19.04. – 22.04.2017 in Kiel

14:40	Kiden, Patrick, Utrecht <i>Holocene relative sea-level changes in the Wadden Sea area, northern Netherlands</i>	Melling, Greogor; Hamburg <i>Integrating observational and numerical data for sediment management purposes</i>
15:05	Mascioli, Francesco, Norderney <i>Subtidal monitoring of the Lower Saxony coastal and marine waters</i>	Buer, Anna-Lucia, Warnemünde <i>Development of Bathing Water Quality along the German Baltic Coast and the Effects of a New Directive</i>
15:30 – 16:00	Coffee break	Coffee break
16:00	Bungenstock, Friederike, Wilhelmshaven <i>WASA-Wadden Sea Archive – a joint project on landscape evolution and settlement history</i>	Schneider von Deimling, Jens, Kiel <i>ECOMAP - Baltic Sea environmental assessments... Highly accurate detection of dumped ammunition in shallow waters</i>
16:25	Stage, Maria, Büsum <i>Sediment- und Habitatkartierung im Schleswig-Holsteinischen Wattenmeer</i>	Taibi, Nasr-Eddine, Algerien <i>Impacts of coastal urbanization and sand mining on the Beach-Dune System ...Western Algeria</i>
16:50	Vafeidis, Nassos, Kiel <i>Sea-Level Rise in the Mediterranean – To Retreat or not to Retreat?</i>	Enderwitz, Sandra, Kiel <i>Initiierung einer Treibsel-Wertschöpfungskette– Vorstellung des Projektes POSIMA</i>

Plenary

17:15 – 18:15 Uhr AMK Mitgliederversammlung

Ende Tag 1: ca. 19:00 Uhr Treffen im Restaurant Jack's Kitchen ?

End of day 1: ca. 19:00 meeting at Jack's Kitchen ? ?



AMK Conference program Day 2:

Plenary

21.04.	Session themes: risk & adaptation // ecology & environment // ICZM
09:00	Keynote Speech: Hofstede, Jacobus, Kiel <i>The Future of the Halligen islands in the light of Climate Change</i>
09:45	Deicke, Matthias, Göttingen <i>Beobachtungen zum Oberflächenwachstum auf den Halligen von 2007 bis 2017</i>
10:10	Wöffler, Theide, Aachen <i>Optimierung des Küsten- und Hochwasserschutzes auf den Halligen</i>
10:35 -11:00	Coffee break
11:00	Inacio; Miguel, Warnemünde <i>Assessment of marine ecosystem services: from transitional to coastal waters</i>
11:25	Friedland, René, Warnemünde <i>Are mussel mitigation cultures a potential nutrient retention measure?</i>
11:50	Kruse, Marion, Kiel <i>The German Baltic Sea and Coast: assessment of ecosystem services today and in the past</i>
12:20 -13:10	Lunch break
13:10-13:30	12:45 – 14:00 EUCC-D Mitgliederversammlung (Raum Bosch) For non-members of EUCC Viewing posters (Foyer)
13:30	Paul, Maike, Braunschweig <i>More than just a stick – how plant shape affects eco-hydraulic interactions and resulting ecosystem services</i>
14:00	Carus, Jana, Braunschweig <i>How can process based modelling help evaluating the effect of artificial seagrass?</i>
14:25	Schernewski, Gerald, Warnemünde <i>Beach macro-litter monitoring on southern Baltic beaches</i>
14:50	Haseler, Mirko, Warnemünde <i>Marine litter tidal zone monitoring at Baltic Sea and river beaches</i>
15:15-15:45	Coffee break
15:45	Krost, Peter, Kiel <i>Protecting the Unknown...</i>
16:10	Schumacher, Johanna, Warnemünde <i>Methodologies to support coastal management - A public participation and preference tool and its application</i>
16:40	Sliwka, Hannah, Eckernförde <i>Vom Wal zum PAL...</i>
17:00 – 17:15	Farewell talks
17:15	The end (take your posters home with you)
From 18:00	Ende Tag 1: Treffen im Restaurant Forstbaumschule End of day 1: meeting at Park Restaurant & beer garden Forstbaumschule



Poster session

Name & Town	Theme & Topic of poster
Beck, A.; Bergen, N	<i>Analysis of conflicts with large scale aquaculture in a Norwegian Fjord</i>
Boesl, F., Köln	<i>Boulder transport on a coral reef platform of Samar, Philippines...</i>
Engel, M., Köln	<i>Holocene coastal regression and facies patterns of a subtropical arid carbonate environment – The sabkha of Al-Zareq, Qatar</i>
Erkul, E. Kiel	<i>A geophysical approach for mapping and quantifying near-surface freshwater-saltwater transitions</i>
Fröhlich, J.; Husum	<i>Küste im Klimawandel – Ideen für den Husumer Dockkoog</i>
Groß, F., Kiel	<i>From hazard analysis to an integrated risk assessment – Can we do better?</i>
Herhaus, L. Warnemünde	<i>Projekt KLIWAKOM – Anpassung an den Klimawandel in Kommunen</i>
Neumann, B. Kiel	<i>Socio-ecological valuation of ecosystem services for the West Antarctic Peninsula region</i>
Rabbel, W., Kiel	<i>PingPong – a new marine seismic system for 3D imaging of geological strata and archaeological prospecting</i>
Reimers, C. Flintbek	<i>Environmental observation and monitoring in the coastal waters of S-H</i>
Röder, T., Kiel	<i>Monitoring sustainable development of the Wadden Sea Region</i>
Rössner, Y., Eckernförde	<i>Legislation issues for establishment of full scale mussel farming in the Baltic Sea</i>
Sabaliauskaite, V., Warnemünde	<i>Marine litter monitoring modification according to extreme events</i>
Scheder, J. Wilhelmshaven	<i>Holocene relative sea level reconstruction at the German North Sea coast</i>
Schneider von Deimling, J., Kiel	<i>Highly accurate detection of dumped ammunition in shallow waters</i>
Schöder, S., List-Sylt	<i>Late Holocene Sedimentation in Coastal Areas of the South Shetland Islands, Antarctica</i>
Schumacher, S., Warnemünde	<i>A Systems Approach Framework for Coasts: Eco-technologies in the Szczecin (Oder-) Lagoon</i>
Schürch, M., Cambridge	<i>Quantification of vegetation-induced allochthonous sediment deposition on coastal salt marshes</i>
Staudt, F. Hannover	<i>STENCIL – Strategies and Tools for Environment-Friendly Shore Nourishments as Climate Change Impact Low-Regret Measures</i>
Sterr, H. Kiel	<i>Klimabündnis Kieler Bucht // Kiel Bay Climate Alliance</i>
Stybel, N., Warnemünde	<i>Introducing sustainability to coastal angling tourism in the South Baltic Region</i>
Weerts, H., Amersfoort, NL	<i>The coastal landscapes of the Netherlands on a national scale</i>

